

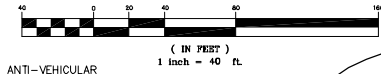
# EDISON PLACE PLAT ONE

BEING ALL OF LOT "A" IN THE PLAT OF ONTARIO PLACE AS RECORDED IN LUCAS COUNTY PLAT VOLUME 200309 PAGE 080063043; ALL OF LOTS 5, 6, AND 7 TOGETHER WITH THE VACATED ALLEY ADJACENT THERETO AND PART OF LOTS 8 - 17 INCLUSIVE AND 1/2 OF THE VACATED ALLEY LYING NW. OF THE NW. LINE OF THE PLAT OF ONTARIO PLACE AND THE SE. LINE OF MICHIGAN AVE., ALL BEING IN BLOCK 130 OF THE PLAT OF NORTH TOLEDO AS RECORDED IN LUCAS COUNTY PLAT VOLUME 5 PAGE 7; TOGETHER WITH THAT PORTION OF VACATED MICHIGAN AVE. THAT IS NE. OF THE SW. LINE OF LOTS 17 IN BLOCK 130 AND LOT 27 IN BLOCK 143 OF N. TOLEDO AND SW. OF THE SW. RIGHT-OF-WAY OF BASSETT STREET; TOGETHER WITH ALL OF LOTS 1, 2, 3 AND 18 - 27 INCLUSIVE AND THE SE. 39 FEET OF LOT 4 AND THAT PORTION OF THE VACATED ALLEY ADJACENT TO THE NW. LINE OF LOTS 18 - 27 INCLUSIVE, AND PART OF LOT 8 - 17 INCLUSIVE, AND PART OF THE VACATED ALLEY THAT IS ADJACENT TO AND NORTHEAST OF LOTS 28 THROUGH 34, INCLUSIVE, ALL BEING IN BLOCK 143 IN NORTH TOLEDO CITY OF TOLEDO, LUCAS COUNTY, OHIO



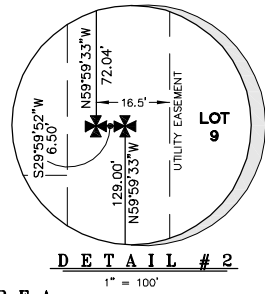
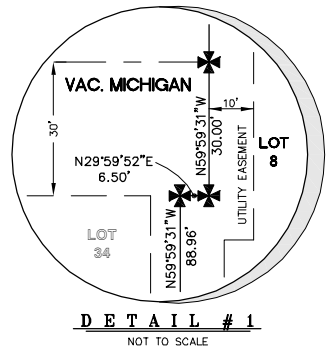
CURVE TABLE						
CURVE	LENGTH	RADIUS	DELTA	TANGENT	CHORD DIR.	CHORD
C1	14.70	100.00	8°25'28"	7.36	N25°47'13"E	14.69
C2	47.54	100.00	27°14'14"	24.23	N07°57'27"E	47.09
C3	18.40	60.00	17°34'19"	9.27	N03°07'29"E	18.33
C4	46.44	60.00	44°20'57"	24.45	N34°05'07"E	45.29
C5	40.00	60.00	38°11'49"	20.78	N75°21'30"E	39.26
C6	40.00	60.00	38°11'54"	20.78	S66°26'39"E	39.26
C7	40.01	60.00	38°12'33"	20.78	S28°14'25"E	39.28
C8	38.11	60.00	36°23'23"	19.72	S09°03'33"W	37.47
C9	40.22	60.00	38°24'10"	20.90	S46°27'20"W	39.47
C10	47.54	100.00	27°14'14"	24.23	S52°02'18"W	47.09
C11	14.70	100.00	8°25'19"	7.36	S34°12'32"W	14.69

GRAPHIC SCALE



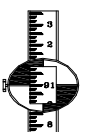
**LEGEND**

- ROADWAY MONUMENT
- MONUMENT FOUND
- MONUMENT SET
- 1/2" GALVANIZED STEEL SET
- N.R. = NOT RADIAL
- P. = PLAT DIST.
- C. = CALC. DIST.
- R. = RECORD
- U. = USED
- M. = MEASURED
- AVE. = ANTI-VEHICULAR EASEMENT
- B/L = BUILDING LINE



**AREA**

PARCEL	SF	ACRES
PARCEL 1180498	13,093.50	0.301
VAC. MICHIGAN AVE	9,137.09	0.210
PARCEL 1117307	157,421.70	3.613
<b>TOTAL</b>	<b>179,652.29</b>	<b>4.124</b>



**LEWANDOWSKI ENGINEERS**  
Registered Civil Engineers & Surveyors  
284 N. ERIE ST. TOLEDO, OHIO 43604  
PHONE: (419) 255-4111 FAX: (419) 255-4112  
WWW.LEWANDOWSKIENGINEERS.COM  
WORK WITH PRIDE SINCE 1916

